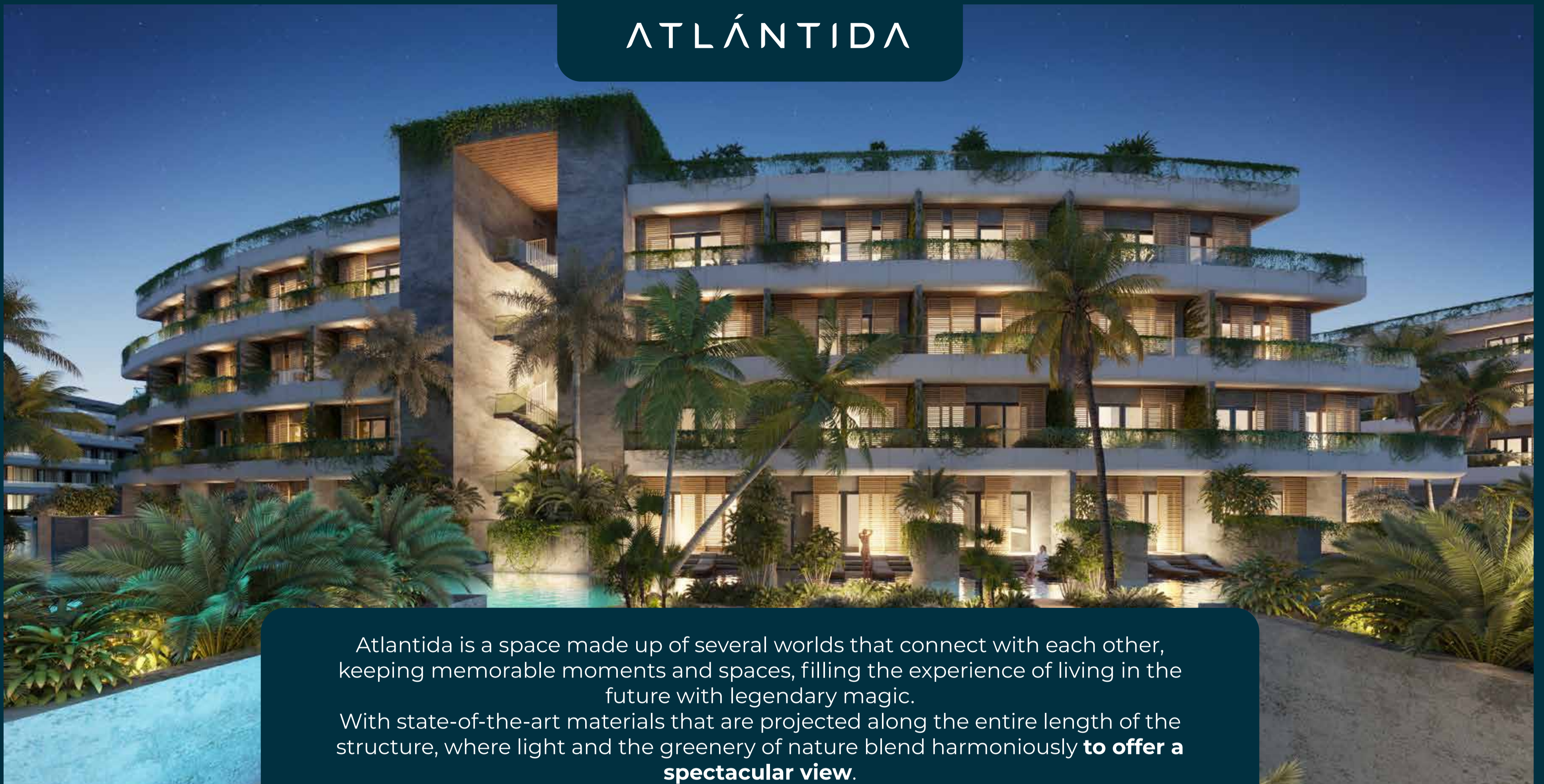




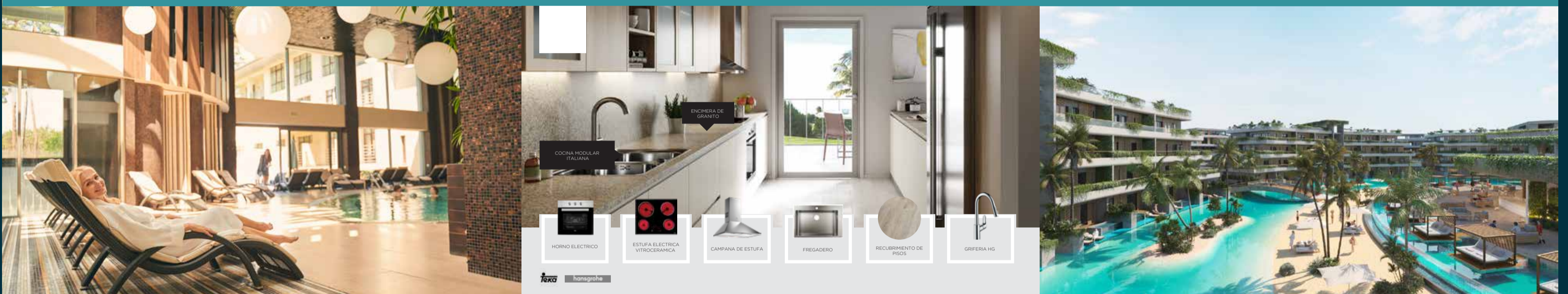
# ATLÁNTIDA



Atlántida is a space made up of several worlds that connect with each other, keeping memorable moments and spaces, filling the experience of living in the future with legendary magic.

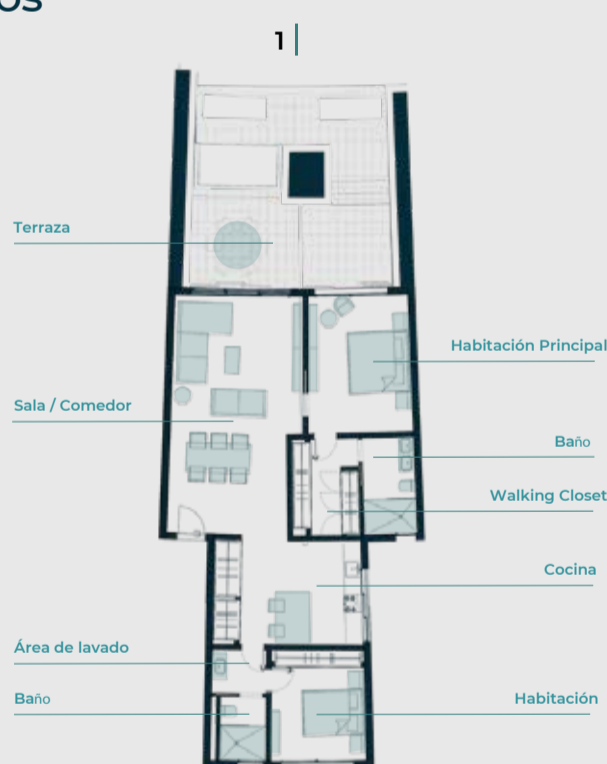
With state-of-the-art materials that are projected along the entire length of the structure, where light and the greenery of nature blend harmoniously **to offer a spectacular view.**

## PICTURES



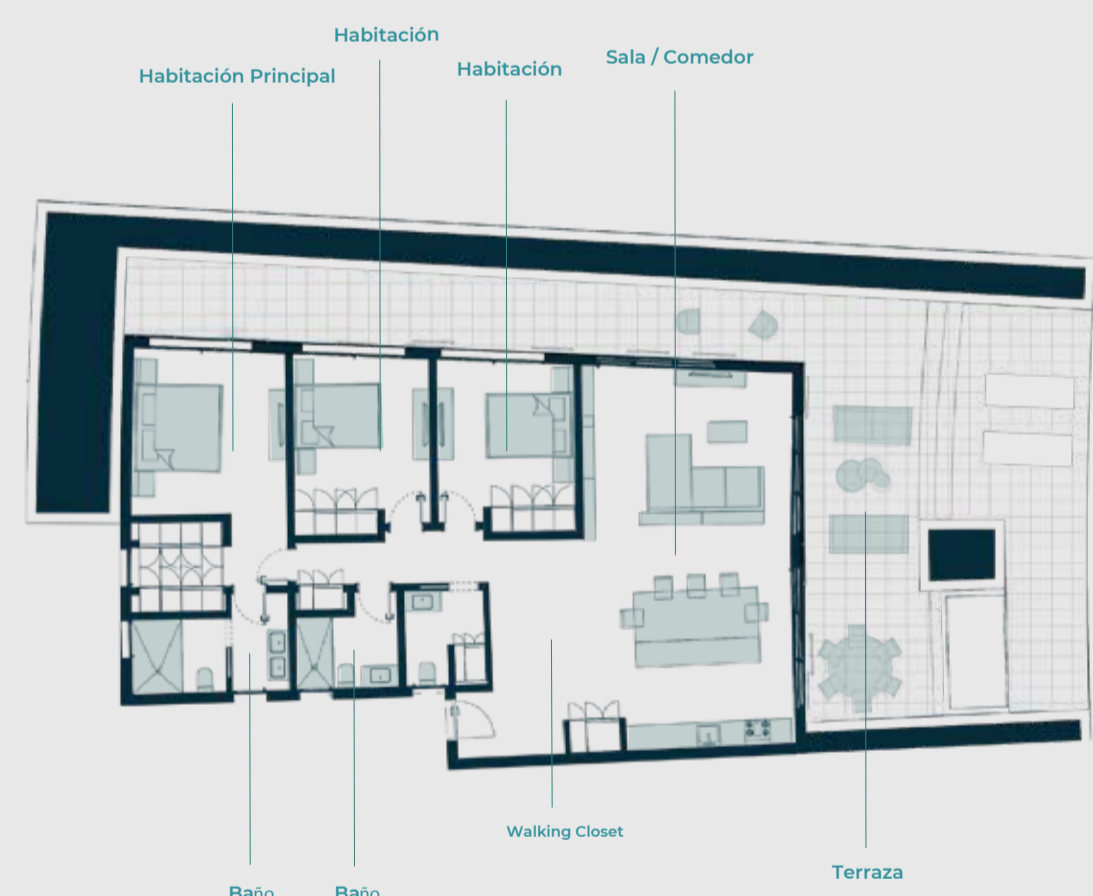
### Apartamentos

1 | 2 Habitaciones  
Área: 172 m<sup>2</sup>  
Área común: 56 m<sup>2</sup>  
Terraza: 56 m<sup>2</sup>



### Apartamentos

1 | 3 Habitaciones  
Área: 253 m<sup>2</sup>  
Área común: 103 m<sup>2</sup>  
Terraza: 103 m<sup>2</sup>



## CONDOMINIUM FLOOR PLANS

## General Characteristics

All departments are 100% furnished and include appliances and air conditioning

Payment in instalments up to 24 months

30-day pledge signature

Capital gain between 10% and 30% during the construction process in projects for future sale

Full hotel management: includes turnkey system, publication of the property on various portals, organisation of check-in and check-out, complete cleaning of the flat including bed linen, towels, etc., provision of supplies and maintenance of the property

VOLVER A PROYECTOS